

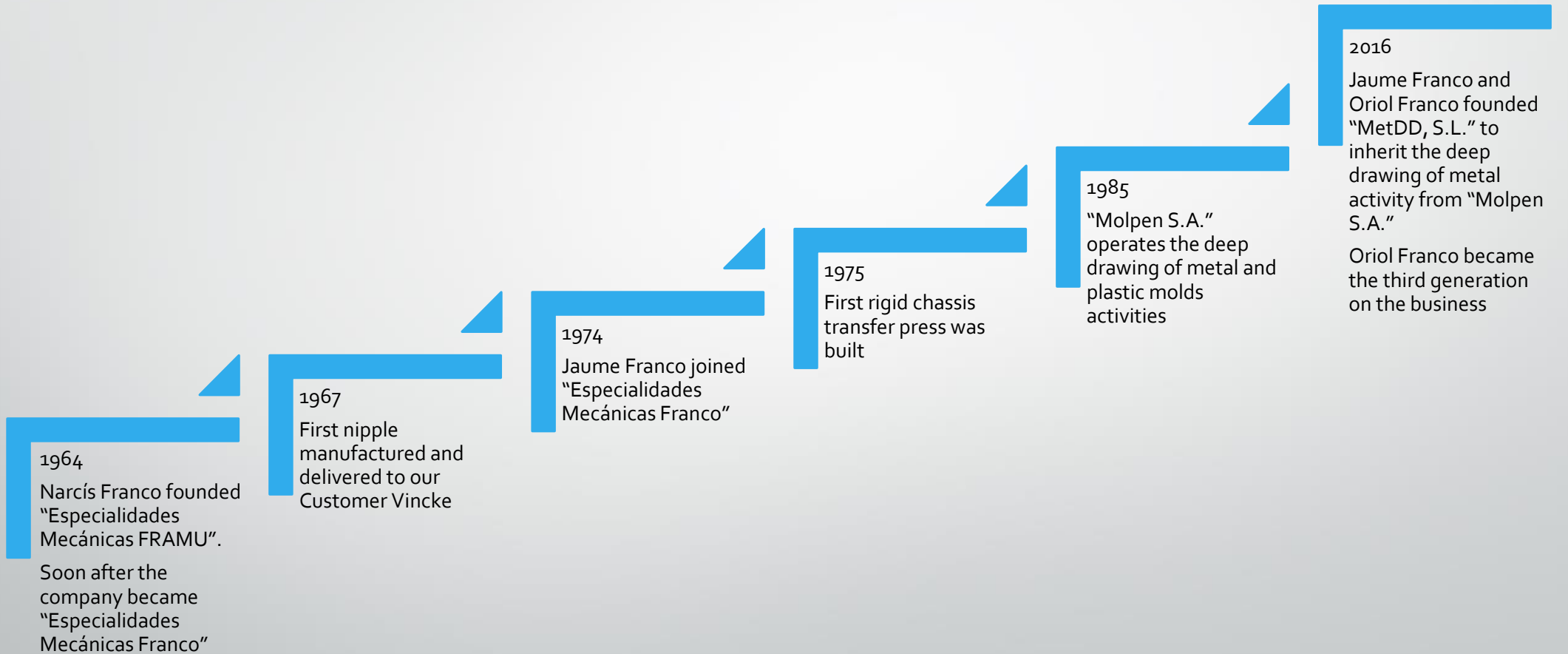


METDD

custom technology for
deep drawing metal

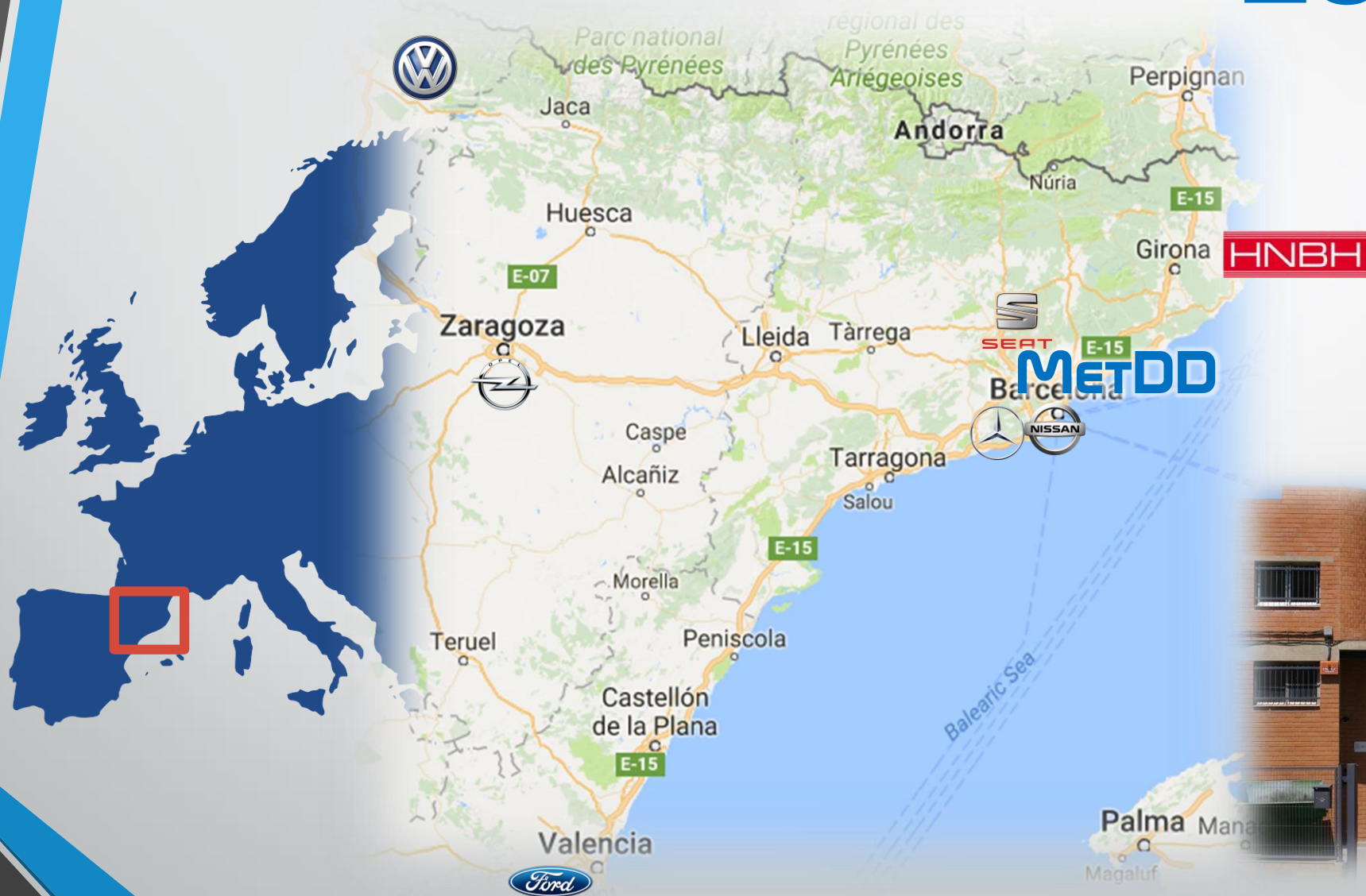
Metallic Deep Drawing SL

Our history



Location

- Privileged location, at 15 minutes from Barcelona
- Surrounded by automotive industry companies network



HNBH

METDD

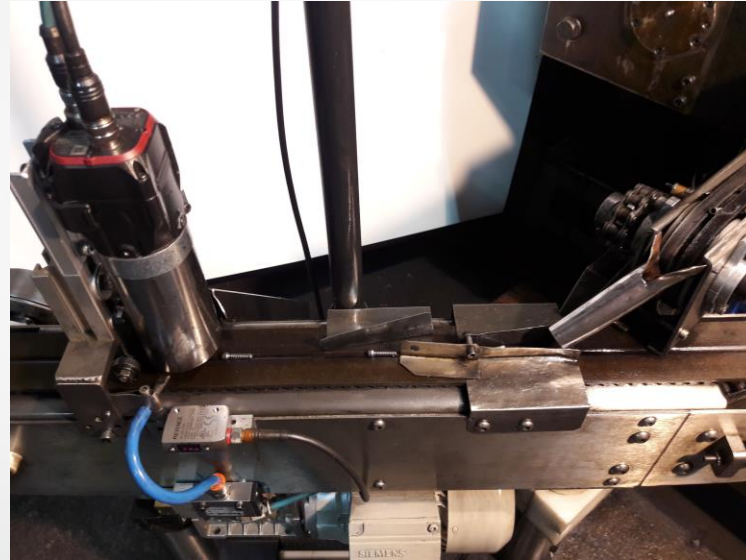


Metallic Deep Drawing S.L.

METDD

Technology

- We have 2 custom built transfer presses for metallic deep drawing
- Capability to manufacture more than 20 million pieces / year
- Third press under construction
- Artificial vision for controlling each piece manufactured



Products

- We are specialized on manufacturing nipples for hydraulic brake hoses.
- Capable of manufacturing grooved pieces entre 26mm long at a diameter of 2,8mm, and 15,5mm long at a diameter to 6mm

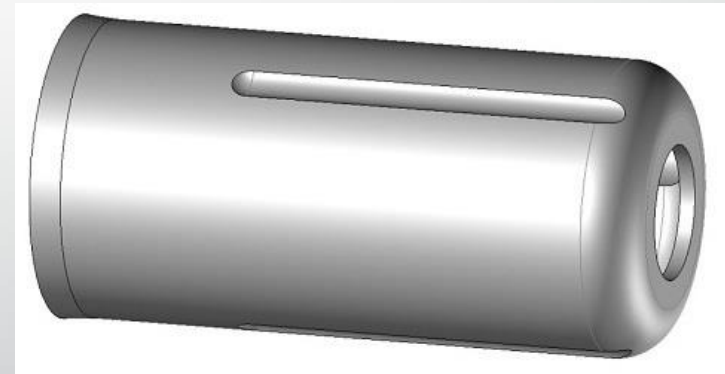


R+D


- We do custom projects for our customers.
- With our own technology, we are able to produce many pieces at the best price, always with the highest quality.

New projects:

- Stainless steel brake cable cap project, using our unique transfer press Technology.



ISO 9001:2015 Certificate





Hereby certifies that the organization's Quality Management System,
METALLIC DEEP DRAWING, S.L
(METDD)
Calle Almeria, 32, Pol. Ind. Cidesa, 08740, Sant Andreu de la Barca, Barcelona

Applicable to the activities of:
MANUFACTURE OF METALLIC COMPONENTS BY DEEP DRAWING


In accordance with standard:
UNE-EN ISO 9001:2015
Certificate No: 1462/18

Date of initial certification	02/02/2018	Issue date	23/02/2018
Expiration date	23/02/2021		

Certificate transferred. Date of initial issue of the certificate by the previous FC: 21/09/2000



MEMBER OF MULTILATERAL
IAF **ENAC**
COOPERATION AGREEMENT
CERTIFICACION
Nº 26/C-S-C-046

The Certification Body

CDQ
David Galeote Godàs

For any additional clarifications on the scope and validity of this certificate, or the applicability of standard requirements, consult Entry Certification. The certificate validity is subjected upon performing the following up audits on a yearly basis.

Ed. 01/02/2013 Parc Tecnocampus Mataró-Maresme, Edificio TCM2, P6, Avinguda Urreest Uribehi, 32, 08392, Mataró, Barcelona
info@cdq.es, www.cdq.es

Quality

Quality is a main concern for us:

- **ISO 9001 approved since year 2000**
- **We have extensive experience in the automotive sector.**

Metallic Deep Drawing S.L.

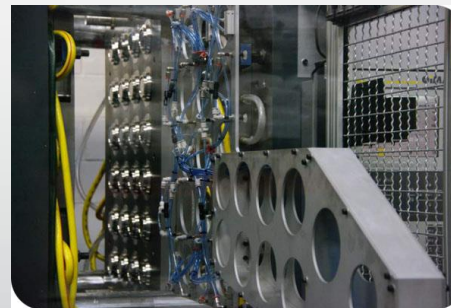
MetDD

Our partner Molpen, S.A.

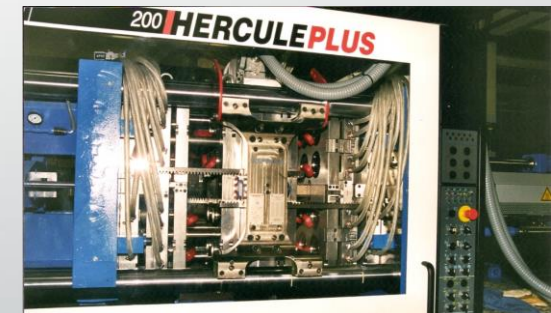
- Our history is binded to "Molpen S.A." who operated the metal deep drawing activity since its foundation in 1985 up to 2016
- "Molpen S.A." is one of our best partners for building tools and parts for our machines.
- "Molpen S.A." is centered on designing and building molds for packaging cosmetic, food and pharmaceutical industry.



Packaging



24 cavities mold



8+8 cavities sandwich mold

Our customers

Main customers:

- NICHIRIN SPAIN S.L.U
- Cortigon, Unipessoal, Lda.

Sales:

- 130.000€

Contact

Email: info@metdd.com

Phone: 936 531 916

Web: www.metdd.com



Address: **C. Almeria 32**
Polígon Cidesa
08740 Sant Andreu de la Barca

Metallic Deep Drawing S.L.

METDD